

# Maritime

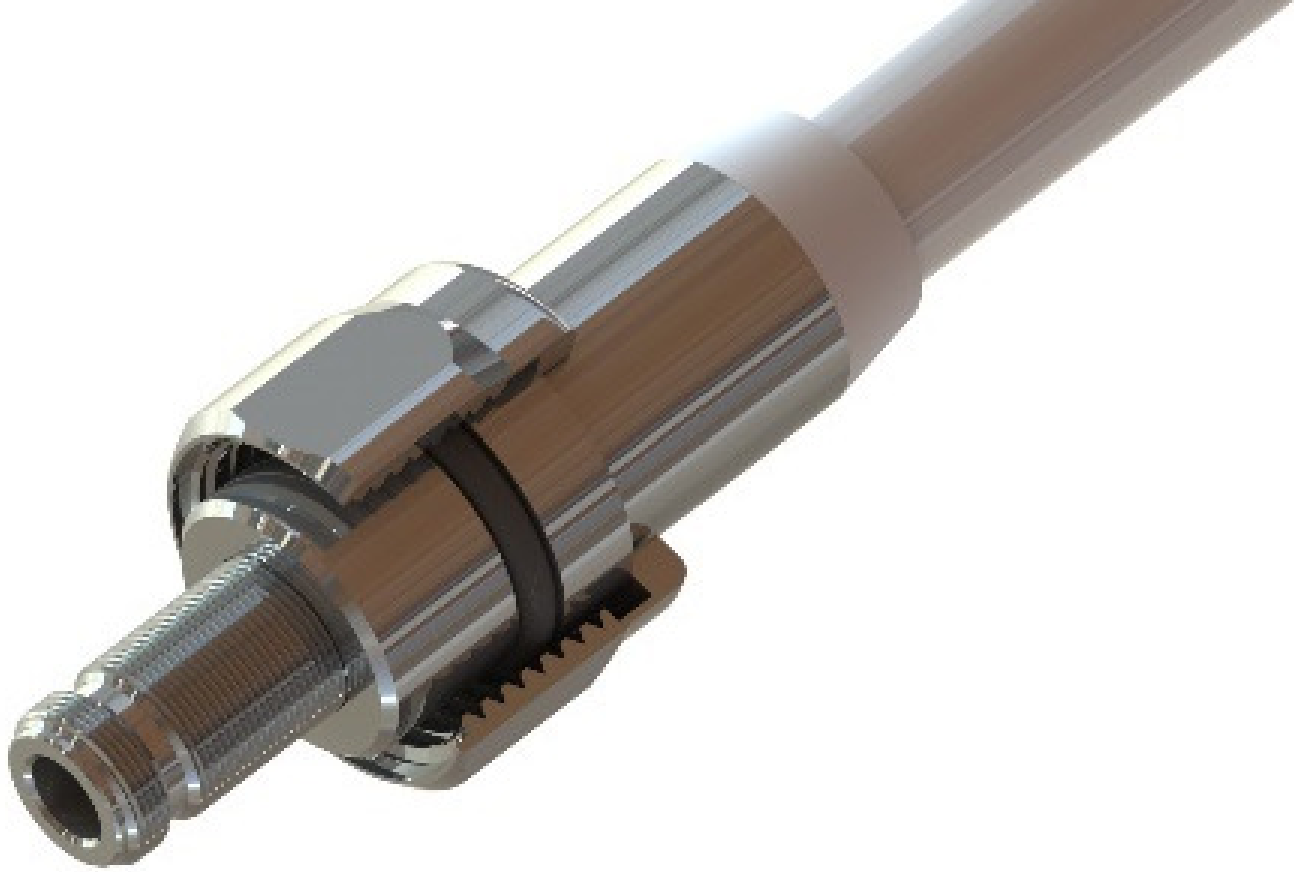
CONNECTIVITY MATTERS

scan  
ANTENNA®



## High quality solutions

Marine Antennas & Accessories



## LIVE DEPENDS ON STAYING CONNECTED

Marine communications have formed our core business for more than 30 years.

People's lives and wellbeing depend on staying connected, with both receiving and transmitting performance being critical. Antennas designed and constructed for a lifetime at sea, must be manufactured and shipped with care.

Our people in the factory in Copenhagen/Denmark know that an antenna for maritime usage often is a lifeline communication equipment, so high quality is a must. It-has to be a Strong link!



# High quality antennas

Our marine antennas are specially designed and manufactured to provide exceptional performance and to withstand the maritime environment.

When using fiberglass tube antennas, which are coated with smooth polyurethane they will last for many years.

Our antennas are intended for use in voice, data, GPS, marine based radios, and other systems.





## VHF23

### 3 dB VHF Stainless Steel

156 - 162.5 MHz

(International Maritime VHF-band)

- Light weight antenna especially made for sail boats
- Full omni directional radiation pattern
- Stainless steel, POM, chromed brass
- UHF-female connector (PL)

VHF

3 dB

0.95 m  
120 g



11023-001 | In Polybag

11023-002 | In Carton tube

## VHF23U

### 3 dB VHF Stainless Steel

141 - 179 MHz - Tunable

(International Maritime VHF-band)

- Light weight antenna especially made for sail boats
- Frequency tunable by customer 6,5 MHz band width
- Full omni directional radiation pattern
- Stainless steel, POM, chromed brass
- UHF-female connector (PL)

VHF

3 dB

1.15 m  
150 g



11023-001U | In Polybag

11023-002U | In Carton tube

## VHF23-1

### 3 dB VHF Stainless Steel

156 - 162.5 MHz

(International Maritime VHF-band)

- Light weight antenna especially made for sail boats
- Full omni directional radiation pattern
- Stainless steel, POM, chromed brass
- With supplied 1" Revolving Nut (G1"-11 thread)
- UHF-female connector (PL)

VHF

3 dB

0.95 m  
160 g



11023-431 | In Polybag + 1" NUT

11023-432 | In Carton tube + 1" NUT

## VHF96

### 6 dB VHF Ground Plane

156 - 162.5 MHz

(International Maritime VHF-band)

- Heavy duty antenna for commercial and fishing vessels
- Full 5/8 wave Ground plane antenna
- Full Omni-Directional radiation pattern
- Power 250 watt
- Easy installation directly on 27mm pole/mast

VHF

6 dB

122 cm  
1500 g



11096-001 | In Polybag

## VHF73

### 3 dB VHF Fiber Glass

146 - 162.5 MHz  
(International Maritime VHF-band)

- High quality VHF antenna for professional use
- Full omni directional radiation pattern
- 150-Watt Power
- UHF-female connector (PL)

- On 1" threaded pole (G1"-11 thread) with Revolving Nut Kit or on optionally brackets

11073-001 | In Polybag  
11073-002 | In Carton tube  
11073-431 | In Polybag + 1" NUT  
11073-432 | In Carton tube +1" NUT

VHF

3 dB

1.26 m  
375 g



## VHF73N

### 3 dB VHF Fiber Glass

146 - 162.5 MHz  
(International Maritime VHF-band)

- High quality VHF antenna for professional use
- Full omni directional radiation pattern
- 150-Watt Power
- N-female connector
- On 1" threaded pole (G1"-11 thread) with Revolving Nut Kit or on optionally brackets

11073-001N | In Polybag  
11073-002N | In Carton tube  
11073-431N | In Polybag + 1" NUT  
11073-432N | In Carton tube +1" NUT

VHF

3 dB

1.26 m  
375 g



## VHF73X

### 3 dB VHF Fiber Glass

118 - 174 MHz Tunable  
(Customer specified frequency)

- High quality VHF antenna for professional use
- Full omni directional radiation pattern
- Specify Centre Frequency (CF) 12% BW
- 100-Watt Power
- N-female connector
- On 1" threaded pole (G1"-11 thread) with Revolving Nut Kit or on optionally brackets

11073-001X | In Polybag  
11073-002X | In Carton tube  
11073-431X | In Polybag + 1" NUT  
11073-432X | In Carton tube +1" NUT

VHF

3 dB

1.44 m  
450 g



## VHF73AIR

### 3 dB VHF Fiber Glass

118 - 137 MHz  
(International AIR-band)

- High quality VHF antenna for AIR-band
- Full omni directional radiation pattern
- 100-Watt Power
- N-female connector
- On 1" threaded pole (G1"-11 thread) with Revolving Nut Kit or on optionally brackets

11073-001AIR | In Polybag  
11073-002AIR | In Carton tube  
11073-431AIR | In Polybag + 1" NUT  
11073-432AIR | In Carton tube +1" NUT

VHF

6 dB

1.44 m  
410 g



## VHF74

### 4 dB VHF Fiber Glass

156 - 162.5 MHz  
(International Maritime VHF-band)

- Economical replacement for all professional marine VHF antennas
- Improved gain compared to other high quality marine VHF antennas
- Full omni directional radiation pattern
- 150-Watt Power
- UHF-female connector (PL)
- On 1" threaded pole (G1"-11 thread) with Revolving Nut Kit or on optionally brackets

11074-001N | In Polybag  
11074-002N | In Carton tube  
11074-431N | In Polybag + 1" NUT  
11074-432N | In Carton tube + 1" NUT

VHF

4 dB

1.36 m  
220 g



## VHF74i

### 4 dB VHF Fiber Glass

156 - 162.5 MHz  
(International Maritime VHF-band)

- Economical replacement for all professional marine VHF antennas
- Improved gain compared to other high quality marine VHF antennas
- Reduced antenna weight
- 150-Watt Power
- UHF-female connector (PL)
- Integrated mount – easy to use
- Reduced shipping cost

11074-003i | In Carton Box

VHF

4 dB

1.36 m  
TBC g



## VHF76

### 6 dB VHF Fiber glass

156 - 162.5 MHz  
(International Maritime VHF-band)

- High quality 6 dB VHF antenna for professional use
- Full omni directional radiation pattern
- 150-Watt Power
- UHF-female connector (PL)
- On 1" threaded pole (G1"-11 thread) with Revolving Nut Kit or on optionally brackets

11076-001 | In Polybag  
11076-002 | In Carton tube  
11076-431 | In Polybag + 1" NUT  
11076-432 | In Carton tube + 1" NUT

VHF

6 dB

2.6 m  
900 g



## VHF76A/B/C/D

### 6 dB VHF Fiber glass

149 - 177 MHz  
(in four models A/B/C/D)

- High quality 6 dB VHF antenna for professional use
- Full omni directional radiation pattern
- 150-Watt Power
- UHF-female connector (PL)
- On 1" threaded pole (G1"-11 thread)

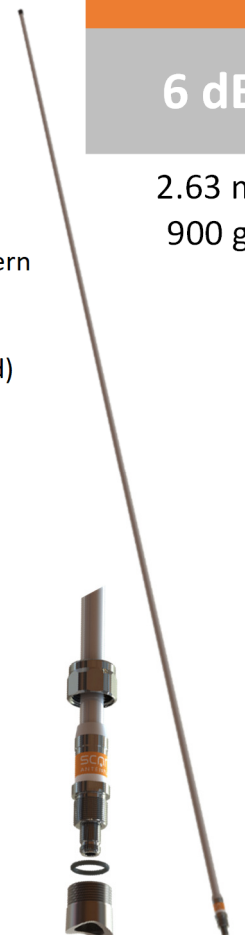
A: 149-156 MHz  
B: 156-163 MHz  
C: 163-170 MHz  
D: 170-177 MHz

(Ordering with specified model put A, B, C or D on the back of the P/N)  
11076-001 | In Polybag  
11076-002 | In Carton tube  
11076-431 | In Polybag + 1" NUT  
11076-432 | In Carton tube + 1" NUT

VHF

6 dB

2.63 m  
900 g



## VHF76X

### 6 dB VHF Fiber glass

118 - 174 MHz

(Customer specified frequency)

- High quality 6 dB VHF antenna for professional use
- 150-Watt Power
- UHF-female connector (PL)
- Full omni directional radiation pattern
- Specify Centre Frequency (CF) 5% BW
- On 1" threaded pole (G1"-11 thread) with Revolving Nut Kit or on optionally brackets

11076-001 | In Polybag

11076-002 | In Carton tube

11076-431 | In Polybag + 1" NUT

11076-432 | In Carton tube + 1" NUT



VHF

6 dB

2.6 – 3.4 m

900 g

## VHF89

### 9 dB VHF Fiber glass

142 - 166 MHz

(International Maritime VHF-band)

- High quality heavy duty 9 dB VHF antenna for professional use
- Full omni directional radiation pattern
- Bandwidth 24 MHz (VSWR < 2.0)
- 155-164 MHz (VSWR < 1.5)
- 150-Watt Power
- N-female connector
- Integrated mount

13089-002 | In Carton tube



VHF

9 dB

4.5 m

5000 g

## VHF54 1"-14NF threaded

### 4 dB VHF Fiber Glass

156 – 162.5 MHz

(International Maritime VHF-band)

With fixed 10 or 20 m cable

- VHF antenna especially made for leisure boats
- Full omni directional radiation pattern
- 150-Watt Power
- For mounting on all US style brackets with 1"-14NF threaded stud



VHF

4 dB

1.37 m

0.7-1.1 kg

## VHF56 1"-14NF threaded

### 6 dB VHF Fiber Glass

156 – 162.5 MHz

(International Maritime VHF-band)

With fixed 10 or 20 m cable

- VHF antenna especially made for leisure boats
- Full omni directional radiation pattern
- 100-Watt Power
- For mounting on all US style brackets with 1"-14NF threaded stud

11056-611 | In Polybag 10m cable

11056-612 | In Carton tube 10m cable

11056-621 | In Polybag 20m cable

11056-622 | In Carton tube 20m cable



VHF

6 dB

2.7 m

1.8-2.2 kg

## DABAMFM23

DAB/AM/FM  
Stainless Steel Antenna

- DAB/AM/FM receiving antenna especially made for leisure boats
- Full omni directional radiation pattern
- Stainless steel, POM, chromed brass
- UHF-female connector (PL)

15023-001 | In Polybag  
15023-002 | In Carton tube  
15023-221 | In Polybag + Mount kit  
15023-222 | In Carton tube + Mount kit

DAB/FM

RECEIVING

0.95 m  
120 g



## DABAMFM23-1

DAB/AM/FM  
Stainless Steel Antenna  
(with 1" Revolving Nut)

- DAB/AM/FM receiving antenna especially made for leisure boats
- Full omni directional radiation pattern
- Stainless steel, POM, chromed brass
- Light weight
- With supplied 1" Revolving Nut (G1"-11 thread)
- UHF-female connector (PL)

15023-431 | In Polybag + 1" NUT  
15023-432 | In Carton tube + 1" NUT

DAB/FM

RECEIVING

0.95 m  
160 g



## DABAMFM54

DAB/AM/FM receiving  
Glass Fiber Antenna

With fixed 10 or 20 m cable  
1"-14NF threaded

- DAB/AM/FM receiving antenna especially made for leisure boats
- Economical replacement for all professional DAB/AM/FM antennas
- Full omni directional radiation pattern
- For mounting on all US style brackets with 1"-14NF threaded stud

15054-611 | In Polybag 10m cable  
15054-612 | In Carton tube 10m cable  
15054-621 | In Polybag 20m cable  
15054-622 | In Carton tube 20m cable

DAB/FM

RECEIVING

1.37 m  
0.7-1.1 kg



## DABAMFM56

DAB/AM/FM receiving  
Glass Fiber Antenna

With fixed 10 or 20 m cable  
1"-14NF threaded

- DAB/AM/FM receiving antenna especially made for leisure boats
- Economical replacement for all professional DAB/AM/FM antennas
- Full omni directional radiation pattern
- For mounting on all US style brackets with 1"-14NF threaded stud

15056-611 | In Polybag 10m cable  
15056-612 | In Carton tube 10m cable  
15056-621 | In Polybag 20m cable  
15056-622 | In Carton tube 20m cable

DAB/FM

RECEIVING

2.7 cm  
1.8-2.2 kg





## DABAMFM74

DAB/AM/FM receiving  
Glass Fiber Antenna

- DAB/AM/FM receiving antenna
- Long range DAB/AM/FM Radio antenna
- Full omni directional radiation pattern
- UHF-female connector (PL)
- On 1" threaded pole (G1"-11 thread) with Revolving Nut Kit or on optionally brackets

15074-001 | In Polybag  
15074-002 | In Carton tube  
15074-431 | In Polybag + 1" NUT  
15074-432 | In Carton tube + 1" NUT

DAB/FM

RECEIVING

1.36 m

220 g



## DABAMFM76

DAB/AM/FM receiving  
Glass Fiber Antenna  
(for professional use)

- DAB/AM/FM receiving antenna
- Long range DAB/AM/FM Radio antenna
- Full omni directional radiation pattern
- UHF-female connector (PL)
- On 1" threaded pole (G1"-11 thread) with Revolving Nut Kit or on optionally brackets

15076-001 | In Polybag  
15076-002 | In Carton tube  
15076-431 | In Polybag + 1" NUT  
15076-432 | In Carton tube + 1" NUT

DAB/FM

RECEIVING

2.6 m

900 g



## VHFGPS4

Dual Band VHF/GNSS Glass  
Fiber Antenna

156 - 162.5 MHz / 1575.5 MHz  
(Maritime Identification systems)

- High quality dual-band VHF and active GNSS antenna for professional use
- 4 satellite GNSS systems included: GPS, GLONASS, BeiDou and Galileo
- VHF 3 dB / GNSS: 26 dB
- Single down-lead antenna cable design with below deck duplex filter 10100-000 for easier installation (Not included to be ordered separately)
- N-female connector

(other packages to be found on datasheet)

11604-001 | In Polybag  
11604-002 | In Carton tube  
11604-431 | In Polybag + 1" NUT  
11604-432 | In Carton tube + 1" NUT



10100-000 to be ordered separately

VHF/GPS

3 dB

1.1 m

520 g



## AIS23

3 dB AIS VHF Stainless Steel

161.5 - 162.5 MHz  
(International AIS-VHF-band)

- Light weight antenna especially made for sail boats
- Full omni directional radiation pattern
- Stainless steel, POM, chromed brass
- UHF-female connector (PL)

12023-001 | In Polybag  
12023-002 | In Carton tube  
12023-221 | In Polybag + Mount kit  
12023-222 | In Carton tube + Mount kit

AIS

3 dB

0.92 m

120 g



AIS74

4 dB AIS Glass Fiber Antenna  
161.5 - 162.5 MHz  
(International AIS-VHF-band)

- Long range International Maritime AIS Antenna for professional use
- Improved gain compared to other high quality marine antennas
- Full omni directional radiation pattern
- 150-Watt Power
- UHF-female connector (PL)
- On 1" threaded pole (G1"-11 thread) with Revolving Nut Kit or on optionally brackets

12074-001 | In Polybag  
12074-002 | In Carton tube  
12074-431 | In Polybag + 1" NUT  
12074-432 | In Carton tube + 1" NUT



AIS76

6 dB AIS Glass Fiber Antenna  
161.5 - 162.5 MHz  
(International AIS-VHF-band)

- Long range International Maritime AIS Antenna for professional use
- Improved gain compared to other high quality marine antennas
- Full omni directional radiation pattern
- 150-Watt Power
- UHF-female connector (PL)
- On 1" threaded pole (G1"-11 thread) with Revolving Nut Kit or on optionally brackets

12076-001 | In Polybag  
12076-002 | In Carton tube  
12076-431 | In Polybag + 1" NUT  
12076-432 | In Carton tube + 1" NUT



AIS54 1"-14NF threaded

4 dB AIS Glass Fiber Antenna  
161.5 - 162.5 MHz  
(International AIS-VHF-band)

With fixed 10 or 20 m cable

- Long range International Maritime AIS Antenna especially made for leisure boats
- Improved gain compared to other high quality marine antennas
- Full omni directional radiation pattern
- 150-Watt Power
- For mounting on US style brackets with 1"-14NF threaded stud

12054-611 | In Polybag 10m cable  
12054-612 | In Carton tube 10m cable  
12054-621 | In Polybag 20m cable  
12054-622 | In Carton tube 20m cable



AIS56 1"-14NF threaded

4 dB AIS Glass Fiber Antenna  
161.5 - 162.5 MHz  
(International AIS-VHF-band)

With fixed 10 or 20 m cable

- Long range International Maritime AIS Antenna especially made for leisure boats
- Improved gain compared to other high quality marine antennas
- Full omni directional radiation pattern
- 150-Watt Power
- For mounting on US style brackets with 1"-14NF threaded stud

12056-611 | In Polybag 10m cable  
12056-612 | In Carton tube 10m cable  
12056-621 | In Polybag 20m cable  
12056-622 | In Carton tube 20m cable



## UHF43A/B/C/D/E

### 3 dB UHF Fiber glass

330-470 MHz (covered by 5 models)  
(TETRA, ISM, Marine, PMR, etc.)

- High quality UHF antenna
- Omni directional radiation pattern
- 250-Watt Power
- N-female connector
- On 1" threaded pole (G1"-11 thread) with Revolving Nut Kit or on optionally brackets

A: 380-400 MHz  
B: 406-430 MHz  
C: 425-450 MHz  
D: 445-470 MHz  
E: 330-360 MHz

(Ordering with specified model put A, B, C, D or E on the back of the P/N)

14043-001 | In Polybag  
14043-002 | In Carton tube  
14043-431 | In Polybag + 1" NUT  
14043-432 | In Carton tube + 1" NUT

UHF

3 dB

0.86 – 1.15m  
Max. 400 g



## UHF43X

### 3 dB UHF Fiber glass

398 - 512 MHz  
(Customer specified frequency)

- High quality UHF antenna
- Omni directional radiation pattern
- Specify Centre Frequency (CF) 5% BW
- 250-Watt Power
- N-female connector
- On 1" threaded pole (G1"-11 thread) with Revolving Nut Kit or on optionally brackets

14043-001X | In Polybag  
14043-002X | In Carton tube  
14043-431X | In Polybag + 1" NUT  
14043-432X | In Carton tube + 1" NUT

UHF

3 dB

1.15 m  
Max. 400 g



## UHF44

### 3 dB UHF Fiber glass

330-510 MHz (covered by 4 models)  
(TETRA, ISM, Marine, PMR, etc.)

- Lightweight UHF antenna
- Omni directional radiation pattern
- 200-Watt Power
- N-female connector
- On 1" threaded pole (G1"-11 thread) with Revolving Nut Kit or on optionally brackets

A: 330-380 MHz  
B: 380-430 MHz  
C: 430-470 MHz  
D: 460-510 MHz

(Ordering with specified model put A, B, C, or D on the back of the P/N)

14046-001 | In Polybag  
14046-002 | In Carton tube  
14046-431 | In Polybag + 1" NUT  
14046-432 | In Carton tube + 1" NUT

UHF

3 dB

0.64 m  
350 g



## UHF46A/B/C/D

### 6 dB UHF Fiber glass

380-470 MHz (covered by 4 models)  
(TETRA, ISM, Marine, PMR, etc.)

- High quality UHF antenna
- Omni directional radiation pattern
- 250-Watt Power
- N-female connector
- On 1" threaded pole (G1"-11 thread) with Revolving Nut Kit or on optionally brackets

A: 380-400 MHz  
B: 410-430 MHz  
C: 430-450 MHz  
D: 450-470 MHz

(Ordering with specified model put A, B, C, or D on the back of the P/N)

14046-001 | In Polybag  
14046-002 | In Carton tube  
14046-431 | In Polybag + 1" NUT  
14046-432 | In Carton tube + 1" NUT

UHF

6 dB

1.34 – 1.54m  
Max. 500 g



## UHF46X

### 6 dB UHF Fiber glass

398 - 512 MHz

(Customer specified frequency)

- High quality UHF antenna
- Omni directional radiation pattern
- Specify Centre Frequency (CF) 4% BW
- 250-Watt Power
- N-female connector
- On 1" threaded pole (G1"-11 thread) with Revolving Nut Kit or on optionally brackets

14046-001X | In Polybag

14046-002X | In Carton tube

14046-431X | In Polybag + 1" NUT

14046-432X | In Carton tube + 1" NUT

UHF

6 dB

1.44 – 1.54m  
Max. 500 g



## UHF49A/B/C/D

### 9 dB VHF Fiber glass

380-470 MHz (covered by 4 models)

(TETRA, ISM, Marine, PMR, etc.)

- High quality UHF antenna
- Omni directional radiation pattern
- 250-Watt Power
- N-female connector
- On 1" threaded pole (G1"-11 thread) with Revolving Nut Kit or on optionally brackets

A: 380-410 MHz

B: 400-430 MHz

C: 420-450 MHz

D: 440-470 MHz

(Ordering with specified model put A, B, C, or D on the back of the P/N)

14046-001 | In Polybag

14046-002 | In Carton tube

14046-431 | In Polybag + 1" NUT

14046-432 | In Carton tube + 1" NUT

UHF

9 dB

2.14 m  
800 g



## LTE700WB

### 6 dB LTE Fiber glass

725 - 930 MHz

(LTE700, GSM750/810/850, UMTS800/850)

- Wide-band / high-gain LTE antenna
- Peak gain 9 dB (Marine) 7.1 dBi
- Omni directional radiation pattern
- 200-Watt Power
- N-female connector
- On 1" threaded pole (G1"-11 thread) with Revolving Nut Kit or on optionally brackets

14076-001 | In Polybag

14076-002 | In Carton tube

14076-431 | In Polybag + 1" NUT

14076-432 | In Carton tube + 1" NUT

LTE700

6 dB

1.54 m  
710 g



## LTE800WB

### 6 dB LTE Fiber glass

790 - 960 MHz

(LTE800, GSM850/900, UMTS900, IoT868)

- Wide-band / high-gain LTE antenna
- Peak gain 9 dB (Marine) 7.1 dBi
- Omni directional radiation pattern
- 200-Watt Power
- N-female connector
- On 1" threaded pole (G1"-11 thread) with Revolving Nut Kit or on optionally brackets

14086-001 | In Polybag

14086-002 | In Carton tube

14086-431 | In Polybag + 1" NUT

14086-432 | In Carton tube + 1" NUT

LTE800

6 dB

1.44 m  
550 g





## UHF93A/B/C

### 3 dB LTE Fiber glass

806-960 MHz (covered by 3 models)  
(GSM850/900, UMT850, IOT, SigFox)

- 800/900 MHz LTE antenna
- Omni directional radiation pattern
- 200-Watt Power
- N-female connector
- On 1" threaded pole (G1"-11 thread) with Revolving Nut Kit or on optionally brackets

A: 806-866 MHz  
B: 824-894 MHz  
C: 872-960 MHz

(Ordering with specified model put A, B or C on the back of the P/N)

14093-001 | In Polybag  
14093-002 | In Carton tube  
14093-431 | In Polybag + 1" NUT  
14093-432 | In Carton tube + 1" NUT

GSM800/900

3 dB

0.44 m  
450 g



## UHF96A/B/C

### 6 dB LTE Fiber glass

806-960 MHz (covered by 3 models)  
(GSM850/900, UMT850, IOT, SigFox)

- 800/900 MHz LTE antenna
- Omni directional radiation pattern
- 200-Watt Power
- N-female connector
- On 1" threaded pole (G1"-11 thread) with Revolving Nut Kit or on optionally brackets

A: 806-866 MHz  
B: 824-894 MHz  
C: 890-960 MHz

(Ordering with specified model put A, B or C on the back of the P/N)

14096-001 | In Polybag  
14096-002 | In Carton tube  
14096-431 | In Polybag + 1" NUT  
14096-432 | In Carton tube + 1" NUT

GSM800/900

6 dB

1.34 m  
450 g



## UHF99A/B

### 9 dB LTE Fiber glass

824 - 960 MHz (covered by 2 models)  
(GSM850/900, UMT850, IOT, SigFox)

- 800/900 MHz LTE antenna
- Omni directional radiation pattern
- 200-Watt Power
- N-female connector
- On 1" threaded pole (G1"-11 thread) with Revolving Nut Kit or on optionally brackets

A: 824-894 MHz  
B: 890-960 MHz

(Ordering with specified model put A or B on the back of the P/N)

14099-001 | In Polybag  
14099-002 | In Carton tube  
14099-431 | In Polybag + 1" NUT  
14099-432 | In Carton tube + 1" NUT

GSM800/900

9 dB

1.34 m  
550 g



## UHF186

### 6 dB GSM1800 Fiber glass

1710-1880 MHz (GSM1800, DCS)

- Omni directional radiation pattern
- 100-Watt Power
- N-female connector
- On 1" threaded pole (G1"-11 thread) with Revolving Nut Kit or on optionally brackets

14186-001 | In Polybag  
14186-002 | In Carton tube  
14186-431 | In Polybag + 1" NUT  
14186-432 | In Carton tube + 1" NUT

GSM1800

6 dB

0.64 m  
310 g



## UHF189

### 9 dB GSM1800 Fiber glass

1710-1880 MHz (GSM1800, DCS)

- Omni directional radiation pattern
- 100-Watt Power
- N-female connector
- On 1" threaded pole (G1"-11 thread) with Revolving Nut Kit or on optionally brackets

14189-001 | In Polybag  
14189-002 | In Carton tube  
14189-431 | In Polybag + 1" NUT  
14189-432 | In Carton tube + 1" NUT

## GSM1800

9 dB

0.84 m  
400 g



## UHF196

### 6 dB GSM1900 Fiber glass

1850-1990 MHz (GSM1900, DECT, PCS)

- Omni directional radiation pattern
- 100-Watt Power
- N-female connector
- On 1" threaded pole (G1"-11 thread) with Revolving Nut Kit or on optionally brackets

14196-001 | In Polybag  
14196-002 | In Carton tube  
14196-431 | In Polybag + 1" NUT  
14196-432 | In Carton tube + 1" NUT

## GSM1900

6 dB

0.64 m  
310 g



## UHF199

### 9 dB GSM1900 Fiber glass

1850-1990 MHz (GSM1900, DECT, PCS)

- Omni directional radiation pattern
- 100-Watt Power
- N-female connector
- On 1" threaded pole (G1"-11 thread) with Revolving Nut Kit or on optionally brackets

14199-001 | In Polybag  
14199-002 | In Carton tube  
14199-431 | In Polybag + 1" NUT  
14199-432 | In Carton tube + 1" NUT

## GSM1900

9 dB

0.84 m  
400 g



## UHF219

### 9 dB UMTS Fiber glass

1920-2170 MHz (UMTS, 3G)

- Omni directional radiation pattern
- 40-Watt Power
- N-female connector
- On 1" threaded pole (G1"-11 thread) with Revolving Nut Kit or on optionally brackets

14219-001 | In Polybag  
14219-002 | In Carton tube  
14219-431 | In Polybag + 1" NUT  
14219-432 | In Carton tube + 1" NUT

## UMTS

9 dB

0.64 m  
350 g



## UHF243

3 dB UMTS Fiber glass  
2300-2500 MHz (WLAN, WiFi 2.4)

- Omni directional radiation pattern
- 40-Watt Power
- N-female connector
- On 1" threaded pole (G1"-11 thread) with Revolving Nut Kit or on optionally brackets

14243-001 | In Polybag  
14243-002 | In Carton tube  
14243-431 | In Polybag + 1" NUT  
14243-432 | In Carton tube + 1" NUT



WLAN

3 dB

0.21 m  
230 g

## UHF249

9 dB WLAN Fiber glass  
2310-2485 MHz (WLAN, ISM, WiFi 2.4)

- Omni directional radiation pattern
- 80-Watt Power
- N-female connector
- On 1" threaded pole (G1"-11 thread) with Revolving Nut Kit or on optionally brackets

14249-001 | In Polybag  
14249-002 | In Carton tube  
14249-431 | In Polybag + 1" NUT  
14249-432 | In Carton tube + 1" NUT



WLAN

9 dB

0.89 m  
600 g

## UHF263

3 dB 4G/LTE Fiber glass  
2500-2690 MHz (4G, LTE2600)

- Omni directional radiation pattern
- 40-Watt Power
- N-female connector
- On 1" threaded pole (G1"-11 thread) with Revolving Nut Kit or on optionally brackets

14263-001 | In Polybag  
14263-002 | In Carton tube  
14263-431 | In Polybag + 1" NUT  
14263-432 | In Carton tube + 1" NUT



LTE2600

3 dB

0.21 m  
230 g

## WiFi2B9

9 dB WiFi Fiber glass  
2400-2495 / 4910-5925 MHz  
(Dual band WiFi 2.4 / 5.0)

- Omni directional radiation pattern
- 10-Watt Power
- N-female connector
- On 1" threaded pole (G1"-11 thread) with Revolving Nut Kit or on optionally brackets

18001-001 | In Polybag  
18001-002 | In Carton tube  
18001-431 | In Polybag + 1" NUT  
18001-432 | In Carton tube + 1" NUT



WiFi

9 dB

0.56m  
140 g

## UHF4G

### Multiband 4G antenna

790-2690 MHz (all band one antenna)  
(2G/3G/4G)

- High quality Cellular antenna
- LTE/GSM/UMTS/WiFi 2.4
- Compact and light weight
- Omni directional radiation pattern
- 100-Watt Power
- N-female connector
- On 1" threaded pole (G1"-11 thread) with Revolving Nut Kit or on optionally brackets

14493-001 | In Polybag  
14493-002 | In Carton tube  
14493-431 | In Polybag + 1" NUT  
14493-432 | In Carton tube + 1" NUT

LTE/4G

3-10 dB

0.44 m  
300 g



## UHF5G

### Multiband 5G antenna

698 - 3800 MHz (all band one antenna)  
(2G/3G/4G/5G)

- High quality cellular antenna
- 5G/LTE/GSM/UMTS/WiFi 2.4
- Compact and light weight
- Omni directional radiation pattern
- 100-Watt Power
- N-female connector
- with fixed 1" Revolving Nut or on optionally brackets

14593-001 | In Polybag  
14593-002 | In Carton tube  
14593-431 | In Polybag + 1" NUT  
14593-432 | In Carton tube + 1" NUT

LTE/5G

3-10 dB

0,47 m  
360 g



## UHF5G-plus

### Multiband 5G antenna (450 - 3800 MHz (all band one antenna))

UHF5G-plus is a long-range high gain multiband antenna.  
Covering 450 - 470 MHz and 698 - 3800 MHz in one and same antenna.  
Suitable for GSM(2G), UMTS(3G), LTE(4G) and 5G NR(5G) devices.

- High quality cellular antenna professional use
- 5G/450/LTE/GSM/UMTS/WiFi 2.4
- Compact and light weight
- Omni directional radiation pattern
- 100-Watt Power
- N-female connector
- with fixed 1" Revolving Nut or on optionally brackets

14693-001 | In Polybag  
14693-002 | In Carton tube  
14693-431 | In Polybag + 1" NUT  
14693-432 | In Carton tube + 1" NUT

LTE/5G

3-10 dB

0,64 m  
440 g



450-470 MHz  
698-3800 MHz



## LORAN/DGPS1

International Maritime  
LORAN and DGPS systems  
(Antenna for high precision navigation)

- Omni directional radiation pattern
- 200-Watt Power

LORAN

DGPS

1.2m  
350 g



16101-001 | In Polybag  
16101-002 | In Carton tube

## LORAN/DGPS2

International Maritime  
LORAN and DGPS systems  
(Antenna for high precision navigation)

- Omni directional radiation pattern
- 200-Watt Power

LORAN

DGPS

2.66 m  
400 g



16102-001 | In Polybag  
16102-002 | In Carton tube

## DXF150

VHF 6-cavity duplexer  
138-174 MHz

- Wide band tunable
- Spacing 4-10 MHz
- 50-Watt Power
- N-female connector

Low: 138-156 MHz  
High: 152-174 MHz



51001-003 | 4-6 MHz Low  
51002-003 | 6-8 MHz Low  
51003-003 | 8-10 MHz Low  
51004-003 | 4-6 MHz High  
51005-003 | 6-8 MHz High  
51006-003 | 8-10 MHz High

If duplex TX and RX frequencies are stated when ordering,  
the duplexers are delivered factory adjusted and  
confirmed with a 5100x-003X version

VHF

Duplexer

## DXF150

VHF 6-cavity duplexer  
406-470 MHz

- 406-470 MHz
- Wide band tunable
- Spacing 5-7 / 9-13 MHz
- 50-Watt Power
- N-female connector



51007-003 | 5-7 MHz  
51008-003 | 9-13 MHz

If duplex TX and RX frequencies are stated when  
ordering, the duplexers are delivered factory adjusted  
and confirmed with a 5100x-003X version

UHF

Duplexer

## GNSS01 (WHITE)

### Low-Profile Active Marine GNSS-Antenna

Active GNSS (GLONASS/GPS & Galileo/ BeiDou) antenna for through-hole deck or bracket mounting.

- For navigation and tracking purpose
- Low profile design
- Non-corrosive
- FME-male connector (integrated in base)

16001-001 | In Polybag



GPS

Active  
26 dB

Ø 48 mm  
0.1 kg

## GNSS02 (BLACK)

### Low-Profile Active Marine GNSS-Antenna

Active GNSS (GLONASS/GPS & Galileo/ BeiDou) antenna for through-hole deck or bracket mounting.

- For navigation and tracking purpose
- Low profile design
- Non-corrosive
- FME-male connector (integrated in base)

16002-001 | In Polybag



GPS

Active  
26 dB

Ø 48 mm  
0.1 kg

## HF100 RX

0.1-30 MHz (**RECEIVING only**)

### Active low-profile broadband RX antenna

- Active LF/HF antenna (receive only)
- Low-profile end-fed antenna design for GMDSS
- Mounting Kit for mounting on G1"-11 threaded pole or bracket included
- Dedicated Power supply 16299-003 (Not included to be ordered separately)

13100-432 | In Carton tube + 1" NUT



16299-033 to be  
ordered separately

LF/HF

RX

0.40 m  
0.30 kg

## NAVTEX Tri-Band

0.49 MHz, 0.518 MHz, 4.2095 MHz (NAVTEX)  
(**RECEIVING only**)

### Active low-profile 3-band Navtex antenna

- Active 3-band Navtex (Navigational Telex) antenna
- Low-profile end-fed multiband antenna design
- Mounting kit for mounting on G1"-11 threaded pole or bracket included
- Dedicated Power supply 16299-003 (Not included to be ordered separately)

13201-432 | In Carton tube + 1" NUT



16299-033 to be  
ordered separately

LF/HF

RX

0.40 m  
0.30 kg

# HF500/600/700/850

## Two-part LF/HF Fiberglass Antennas 1.4-30 MHz

- High quality HF antennas for professional use
  - Suited for antenna systems with Automatic Tuner Units
  - Designed for GMDSS installations
  - Rugged design for demanding environments
  - Chrome plated solid brass joints
  - Mast / Rail mounted
  - Side fed via open single wire
  - Full Omni-Directional radiation pattern
- 
- Small Clamp kit for 5-7m antennas for mast/rail mounted 10000-153 (to be ordered separately)
  - Large Clamp kit for 8-9m antennas for mast/rail mounted 10000-163 (to be ordered separately) HF850 only

**HF500** | 13500-002 | 4.9 m | 1.9 kg | 500-Watt PEP  
**HF600** | 13602-002 | 6.0 m | 2.0 kg | 750-Watt PEP  
**HF700** | 13702-002 | 7.0 m | 2.6 kg | 1000-Watt PEP  
**HF850** | 13802-001 | 8.2 m | 6.8 kg | 1000-Watt PEP

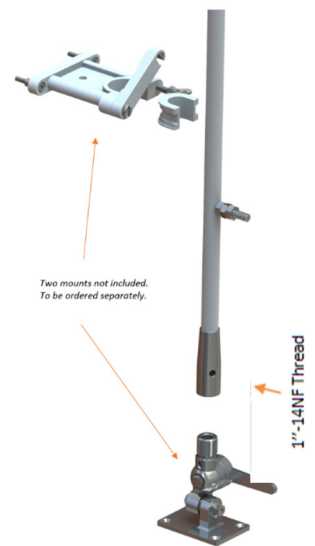
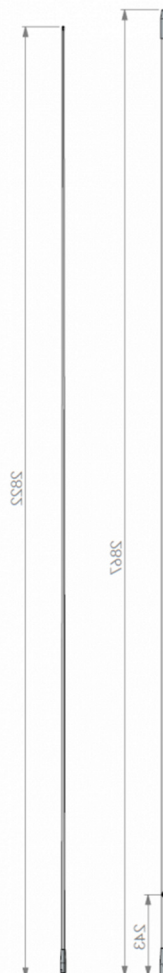


# HF501/601/701

## Two-part LF/HF Fiberglass Antennas 1.4-30 MHz

- High quality HF antennas for professional use
  - Suited for antenna systems with Automatic Tuner Units
  - Designed for GMDSS installations
  - Rugged design for demanding environments
  - Chrome plated solid brass joints
  - 1"-14NF Thread mounted for 4-way mount and upper bracket (must be ordered separately) for easy lay down
  - Side fed via open single wire
  - Full Omni-Directional radiation pattern
- 
- Upper support bracket 10000-471 (to be ordered separately)
  - Mount option for 1"-14NF Thread mounted 10000-323 (to be ordered separately)

**HF501** | 13500-082 | 4.9 m | 2.0 kg | 500-Watt PEP  
**HF601** | 13602-082 | 6.0 m | 2.1kg | 750-Watt PEP  
**HF701** | 13702-082 | 7.0 m | 2.7 kg | 1000-Watt PEP



# HF510/610/710

## Two-part LF/HF Fiberglass Antennas 1.4-30 MHz

- High quality HF antennas for professional use
- Suited for antenna systems with Automatic Tuner Units
- Designed for GMDSS installations
- Rugged design for demanding environments
- Chrome plated solid brass joints
- Mast / Rail mounted
- Coaxial connected via connection box
- Full Omni-Directional radiation pattern
- Small Clamp kit for 5-7m antennas for mast/rail mounted 10000-153 (to be ordered separately)

**HF510** | 13510-002 | 5.0 m | 2.1 kg | 500-Watt PEP  
**HF610** | 13612-002 | 6.0 m | 2.2 kg | 750-Watt PEP  
**HF710** | 13712-002 | 7.0 m | 2.8 kg | 1000-Watt PEP



LF/HF

TX/RX

2-Parts



# HF520/620/720 (RECEIVING only)

## Two-part LF/HF Fiberglass Antennas 0.15-30 MHz

- High quality HF antennas for professional use
- Built in matching transformer for low frequency receiving
- Rugged design for demanding environments
- Chrome plated solid brass joints
- Mast / Rail mounted
- Coaxial connected via connection box
- Full Omni-Directional radiation pattern
- Small Clamp kit for 5-7m antennas for mast/rail mounted 10000-153 (to be ordered separately)

**HF520** | 13520-002 | 5.0 m | 2.1 kg | Receive only  
**HF620** | 13622-002 | 6.0 m | 2.2 kg | Receive only  
**HF720** | 13722-082 | 7.0 m | 2.8 kg | Receive only



LF/HF

RX

2-Parts





## HF6000/7000

### Three-part LF/HF Fiberglass Antennas 1.4-30 MHz

- High quality HF antennas for professional use
- Suited for antenna systems with Automatic Tuner Units
- Designed for GMDSS installations
- Rugged design for demanding environments
- Chrome plated solid brass joints
- Mast / Rail mounted
- Side fed via open single wire
- Full Omni-Directional radiation pattern
- Small Clamp kit for 5-7m antennas for mast/rail mounted 10000-153 (to be ordered separately)

**HF6000** | 13600-002 | 6.0 m | 2.3 kg | 750-Watt PEP

**HF7000** | 13700-002 | 7.0 m | 2.6 kg | 1000-Watt PEP



LF/HF

TX/RX

3-Parts



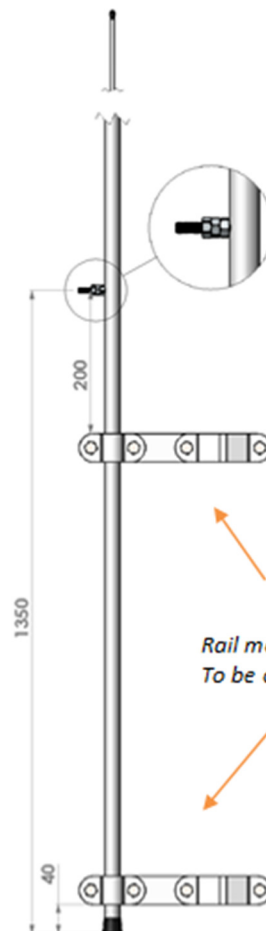
## HF8000/9000

### Three-part LF/HF Fiberglass Antennas 1.4-30 MHz

- High quality HF antennas for professional use
- Suited for antenna systems with Automatic Tuner Units
- Designed for GMDSS installations
- Rugged design for demanding environments
- Chrome plated solid brass joints
- Mast / Rail mounted
- Side fed via open single wire
- Full Omni-Directional radiation pattern
- Large Clamp kit for 8-9m antennas for mast/rail mounted 10000-163 (to be ordered separately)

**HF8000** | 13800-002 | 8.0 m | 6.0 kg | 1200-Watt PEP

**HF9000** | 13900-002 | 9.0 m | 7.1 kg | 1200-Watt PEP



LF/HF

TX/RX

3-Parts



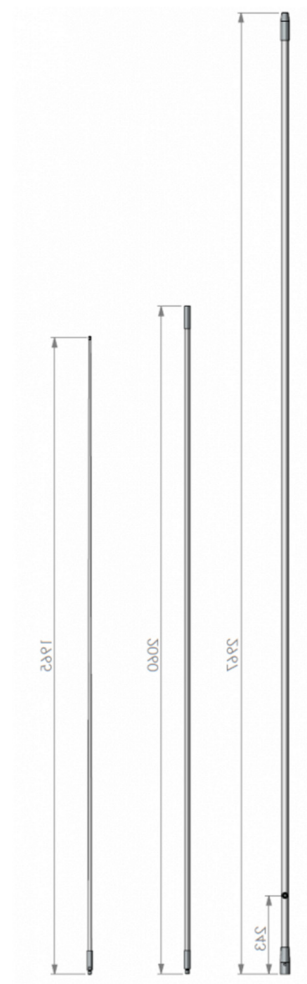
## HF6001/7001

### Three-part LF/HF Fiberglass Antennas 1.4-30 MHz

- High quality HF antennas for professional use
- Suited for antenna systems with Automatic Tuner Units
- Designed for GMDSS installations
- Rugged design for demanding environments
- Chrome plated solid brass joints
- 1"-14NF Thread mounted for 4-way mount and upper bracket (must be ordered separately) for easy lay down
- Side fed via open single wire
- Full Omni-Directional radiation pattern
- Upper support bracket 10000-471 (to be ordered separately)
- Mount option for 1"-14NF Thread mounted 10000-323 (to be ordered separately)

**HF6001** | 13600-082 | 6.0 m | 2.4 kg | 750-Watt PEP

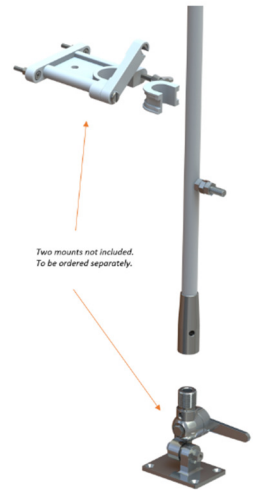
**HF7001** | 13700-082 | 7.0 m | 2.8 kg | 1000-Watt PEP



LF/HF

TX/RX

3-Parts



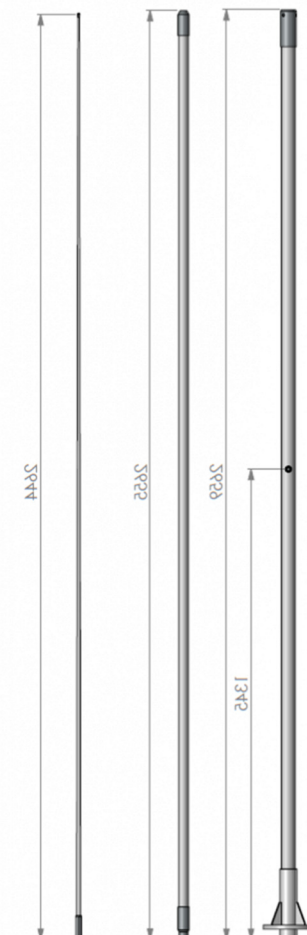
## HF8001/9001

### Three-part LF/HF Fiberglass Antennas 1.4-30 MHz

- High quality HF antennas for professional use
- Suited for antenna systems with Automatic Tuner Units
- Designed for GMDSS installations
- Rugged design for demanding environments
- Chrome plated solid brass joints
- Self-supporting antenna with deck mount
- Side fed via open single wire
- Full Omni-Directional radiation pattern

**HF8001** | 13800-092 | 8.0 m | 8.2 kg | 1200-Watt PEP

**HF9001** | 13900-092 | 9.0 m | 9.3 kg | 1200-Watt PEP



LF/HF

TX/RX

3-Parts



## HF6100/7100

### Three-part LF/HF Fiberglass Antennas 1.4-30 MHz

- High quality HF antennas for professional use
- Suited for antenna systems with Automatic Tuner Units
- Designed for GMDSS installations
- Rugged design for demanding environments
- Chrome plated solid brass joints
- Mast / Rail mounted
- Coaxial connected via connection box
- Full Omni-Directional radiation pattern
- Small Clamp kit for 5-7m antennas for mast/rail mounted 10000-153 (to be ordered separately)

**HF6100** | 13610-002 | 6.0 m | 2.6 kg | 750-Watt PEP  
**HF7100** | 13710-002 | 7.0 m | 2.9 kg | 1000-Watt PEP



LF/HF

TX/RX

3-Parts

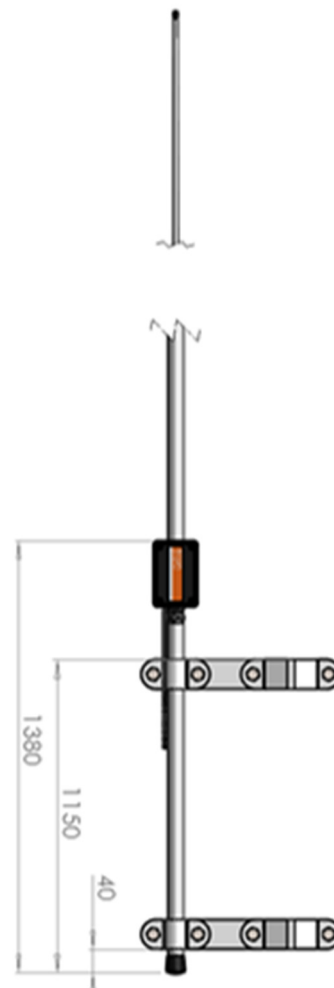


## HF8100/9100

### Three-part LF/HF Fiberglass Antennas 1.4-30 MHz

- High quality HF antennas for professional use
- Suited for antenna systems with Automatic Tuner Units
- Designed for GMDSS installations
- Rugged design for demanding environments
- Chrome plated solid brass joints
- Mast / Rail mounted
- Coaxial connected via connection box
- Full Omni-Directional radiation pattern
- Large Clamp kit for 8-9m antennas for mast/rail mounted 10000-163 (to be ordered separately)

**HF8100** | 13810-002 | 8.0 m | 6.1 kg | 1200-Watt PEP  
**HF9100** | 13910-002 | 9.0 m | 7.2 kg | 1200-Watt PEP



LF/HF

TX/RX

3-Parts



## HF6200/7200 (RECEIVING only)

Three-part LF/HF Fiberglass Antennas  
0.15-30 MHz

- High quality HF antennas for professional use
- Built in matching transformer for low frequency receiving
- Rugged design for demanding environments
- Chrome plated solid brass joints
- Mast / Rail mounted
- Coaxial connected via connection box
- Full Omni-Directional radiation pattern
- Small Clamp kit for 5-7m antennas for mast/rail mounted 10000-153 (to be ordered separately)

**HF6200** | 13620-002 | 6.0 m | 2.6 kg | Receive only

**HF7200** | 13720-002 | 7.0 m | 2.9 kg | Receive only



LF/HF

RX

3-Parts



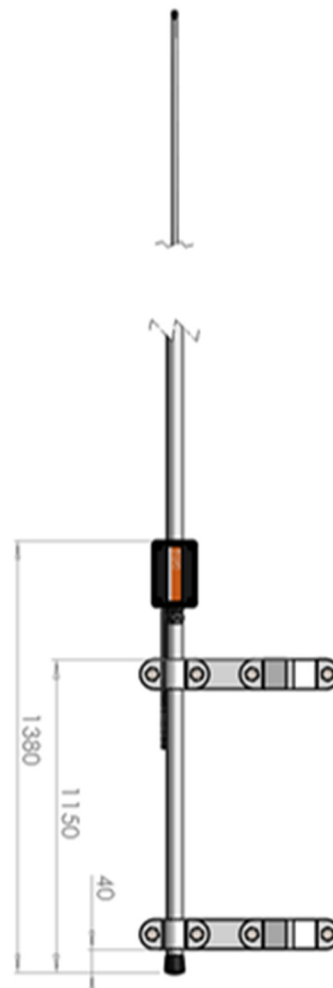
## HF8200/9200 (RECEIVING only)

Three-part LF/HF Fiberglass Antennas  
0.15-30 MHz

- High quality HF antennas for professional use
- Built in matching transformer for low frequency receiving
- Rugged design for demanding environments
- Chrome plated solid brass joints
- Mast / Rail mounted
- Coaxial connected via connection box
- Full Omni-Directional radiation pattern
- Large Clamp kit for 8-9m antennas for mast/rail mounted 10000-163 (to be ordered separately)

**HF8200** | 13820-002 | 8.0 m | 6.1 kg | Receive only

**HF9200** | 13920-002 | 9.0 m | 7.2 kg | Receive only



LF/HF

RX

3-Parts





## PASSIVE OMNI ANTENNA

### IRIDIUM CERTIFIED

Passive omnidirectional antenna for Iridium (Certified)

- Passive Antenna for Iridium terminals
- Well suited for Iridium GO!
- Requires no pointing towards satellite
- Rugged design for reliable performance in harsh conditions
- Compact design
- Smooth surface low loss radome
- Mounts on any US-style Mounting Bracket with 1"-14NF threaded stud



SATCOM

IRIDIUM

Ø94mm  
300 g



65900-003 | Antenna only - In hardbox

## PASSIVE OMNI ANTENNA (+GPS)

### IRIDIUM CERTIFIED

Passive omnidirectional dual band antenna for Iridium (Certified)

- Passive Antenna for Iridium terminals
- Well suited for Iridium GO!
- Requires no pointing towards satellite
- Rugged design for reliable performance in harsh conditions
- Compact dual band (SAT/GPS)
- Smooth surface low loss radome
- Mounts on any US-style Mounting Bracket with 1"-14NF threaded stud



SATCOM

IRIDIUM

Ø94mm  
320 g



65800-003 | Antenna only - In hard box

## PASSIVE OMNI ANTENNA IDEAL FOR IRIDIUM GO!

### IRIDIUM CERTIFIED

Passive omnidirectional dual-band antenna for Iridium (Certified)

- Passive Antenna for Iridium terminals
- Well suited for Iridium GO!
- Requires no pointing towards satellite
- Low loss radome
- Mounts on any US-style Mounting Bracket with 1"-14NF threaded stud



SATCOM

IRIDIUM

Ø95mm  
150 g



65000-001 | Antenna only - In polybag

91006-011 | Adapter cable for Iridium GO - In Polybag

**60101-013****SATCOM****Thuraya active SATCOM Antenna**

- Active Antenna for Thuraya terminals with built-in active GPS antenna
- Omni-Directional Antenna
- Rugged design for reliable performance in harsh conditions
- Mounting bracket included
- DC Feeder required  
NOT included – P/N: 15 518

More details on datasheet!

**60121-013****SATCOM****Thuraya active Hi-Gain SATCOM Antenna**

- High Gain version for extra-long cables
- Active Antenna for Thuraya terminals with built-in active GPS antenna
- Omni-Directional Antenna
- Rugged design for reliable performance in harsh conditions
- Mounting bracket included
- DC Feeder required  
NOT included – P/N 15 518

More details on datasheet!

**60600-001****SATCOM****Thuraya Passive Antenna**

- Passive Antenna for Thuraya terminals
- Omni-Directional Antenna
- Dual-band SAT/GPS antenna
- Built-in active GPS antenna
- Mounts on any US-style Mounting Bracket with 1"-14NF threaded stud

**60805-003****SATCOM****Thuraya Passive Antenna**

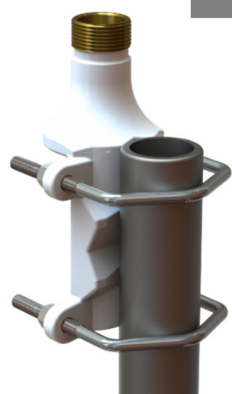
- Passive Antenna for Thuraya terminals
- Omni-Directional Antenna
- Dual-band SAT/GPS antenna
- Built-in active GPS antenna
- Mounts on any US-style Mounting Bracket with 1"-14NF threaded stud

**60400-001****SATCOM****Thuraya Passive Antenna**

- Passive Antenna for Thuraya terminals
- Omni-Directional Antenna
- Dual-band SAT/GPS antenna
- Built-in active GPS antenna
- Made for Magnet mounting on steel roofs and adhesive mounting

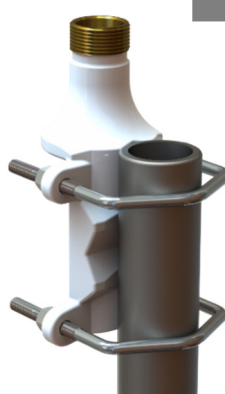
**60410-001****SATCOM****Thuraya Passive Antenna**

- Passive Antenna for Thuraya terminals
- Omni-Directional Antenna
- Multiband SAT/GPS/3G antenna
- Built-in active GPS antenna
- Made for Magnet mounting on steel roofs and adhesive mounting

**10000-133****MOUNT****MAST/RAIL MOUNT HD**

- For all Marine and Base antennas with the 1" Revolving Nut
- Heavy Duty bracket for use at sea
- Solid Brass, White
- Mounting Ø30-75mm pole
- G1"-11

NOTE! 1" Revolving Nut Kit 10000-431 is not included!

**10000-133A****MOUNT****MAST/RAIL MOUNT HD**

- For all Marine and Base antennas with the 1" Revolving Nut
- Heavy Duty bracket for use at sea
- Solid Brass, White
- Mounting Ø30-75mm Aluminium pole
- G1"-11

NOTE! 1" Revolving Nut Kit 10000-431 is not included!

**10000-173****MOUNT****MAST/RAIL MOUNT SS**

- Stainless steel bracket
- Heavy Duty bracket for use at sea
- Mount hole for antenna Ø 25mm
- Mounting Ø38-75mm pole with supplied U-bolts
- Fits all Marine and Base Station Antennas with 1"-14NF external threaded base

**10102-003****MOUNT****MAST/RAIL MOUNT SS**

- For all Marine and Base antennas with the 1" Revolving Nut
- Polished marine grade AISI-316 stainless steel pole bracket
- Mounting Ø30-60mm
- G1"-11

NOTE! 1" Revolving Nut Kit 10000-431 is not included!

**10000-183****MOUNT****MAST/RAIL MOUNT**

- Heavy Duty bracket for direct mounting of antenna
- PU powder coated Aluminium
- Mounting Ø30-60mm with supplied U-bolts
- Fits all Marine and Base Station Antennas with 1"-14NF external threaded base

**10000-141****MOUNT****WALL/RAIL MOUNT SS**

- Stainless steel bracket light version
- Mount hole for antenna Ø 16.5mm
- Mounting Ø10-30mm pole with supplied U-bolts
- Fits all Marine and Base Station Antennas with 1"-14NF external threaded base

**10000-221****MOUNT****MAST/WALL UNIVERSAL MOUNT SS**

- Stainless steel mount
- Mount hole for antenna Ø 16.5mm / Ø 25mm
- For installation of Marine and Base Station antennas on side of mast or on wall

**10000-191****MOUNT****MAST MOUNT UNIVERSAL SS**

- Universal Mast Mount for lightweight & medium duty antennas (max. 1.5m)
- High grade AISI-316 stainless steel
- Mounting Ø30-90mm rails and poles

**10000-153****MOUNT****MAST/RAIL MOUNT KIT  
HF ANTENNAS (SMALL)**

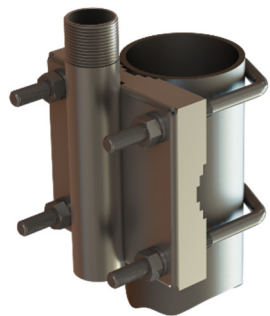
- Small Mount Clamp kit for 5-7m long HF antennas
- Steel (Galvanized)
- Mounting Ø30-90mm rails and poles  
(Kit including 2 brackets)

**10000-163****MOUNT****MAST/RAIL MOUNT KIT  
HF ANTENNAS (large)**

- Large Mount Clamp kit for 8-9m long HF antennas
- Steel (Galvanized)
- Mounting Ø30-90mm rails and Poles  
(Kit including 2 brackets)

**10000-123****MOUNT****MAST/RAIL MOUNT SS**

- Polished marine grade AISI-316 stainless steel pole bracket
- Used with all Marine with 1"-14NF internal threaded base
- Mounting Ø30-60mm with supplied U-bolts

**10000-031****MOUNT****DECK MOUNT SS HD**

- Polished Stainless-steel Mount
- For all Marine and Base antennas with the 1" Revolving Nut
- Height 75mm
- G1"-11



NOTE! 1" Revolving Nut Kit 10000-431 is not included!

**10000-021****MOUNT****DECK MOUNT 1"-14NF**

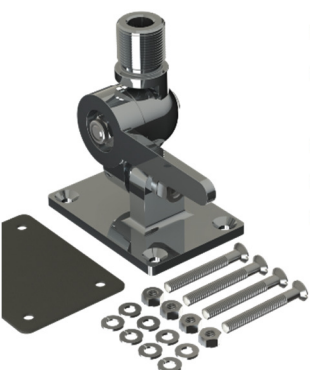
- Polished Stainless-steel Mount
- Fits all Marine with 1"-14NF internal threaded base
- Height 105mm
- Mounting Bolt-on  
(No mounting hardware included)

**10000-010****MOUNT****DECK MOUNT Light-weight 1"-14NF**

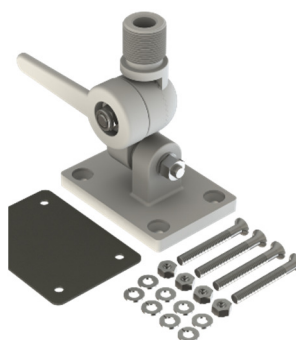
- Nylon Deck Mount
- Fits all Marine with 1"-14NF internal threaded base
- Height 41mm
- NOTE! Not suitable for heavy type antennas

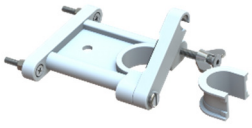
**10000-323****MOUNT****4-WAY MOUNT HD**

- Heavy duty 4-Way tiltable easy lay-down mount
- Chrome plated solid brass
- Deck or wall mounting of Marine
- Fits all Marine and Base Station Antennas with internal 1"-14NF threaded base

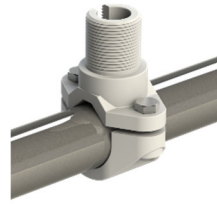
**10000-313****MOUNT****4-WAY MOUNT LW**

- 4-Way tiltable easy lay-down
- Chrome plated solid brass
- Mounting on Deck or wall
- Light Weight Antennas
- Fits all Marine and Base Station Antennas with internal 1"-14NF threaded base
- NOTE! Not suitable for heavy type antennas

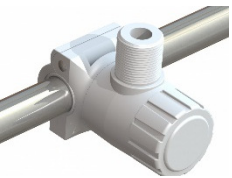


**10000-031****BRACKET****UPPER SUPPORT  
BRACKET LF/HF**

- Easy lay-down type Upper Support Bracket for HF-Antennas
- strong reinforced Nylon
- Accepts antenna Ø 21 - 40 mm

**10000-101****MOUNT****GPS RAIL MOUNT 1"-14NF**

- Universal Rail Mount for light-weight marine, Satcom and GPS antennas with 1"-14NF outer threaded base
- Accepts rails Ø 22 to Ø 26 mm
- Low cost

**10000-111****ADAPTER****RAIL MOUNT LW 1"14NF**

- 4-way easy lay-down rail mount for light-weight marine, Satcom and GPS antennas with US-style internal 1"-14NF threaded base
- Accepts rails Ø 21 mm (1/2") and Ø 26 mm (3/4")

**10000-441****ADAPTER****GPS-ADAPTER 1"-14NF**

- Adapter especially made to mount GNSS01 (16001-000) and GNSS02 (16002-000) on US-style brackets with 1"-14NF inner threaded stud

**10000-411****ADAPTER****ADAPTER TUBE LW (100MM)**

- Nylon adapter tube for converting US-style 1"-14NF threaded brackets into Standard G1"-11 threaded type
- The adapter tube makes it possible to place all light-weight type antennas with 1" Revolving Nut mounting on any US-style bracket with 1"-14NF threaded stud

**10000-421****ADAPTER****1" ADAPTER TUBE HD (150MM)**

- chromed solid brass adapter tube for converting US-style 1"-14NF into G1"-11 threaded type
- makes it possible to place all antennas with 1" Revolving Nut mounting on any US-style bracket with 1"-14NF threaded stud

**10000-461****ADAPTER****ADAPTER TUBE HD (58MM)**

- Adapter Tube for placing all Marine an Base Antennas with 1" Revolving Nut Mounting System (G1"-11) on any US-style 1"-14NF threaded brackets
- Chrome plated solid brass

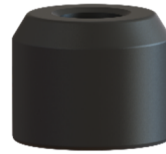
**10000-051****ADAPTER****EXTENSION TUBE (300MM)**

- Polished stainless steel Extension Mast for marine antennas with internal threaded 1"-14NF base
- 1"-14NF inner & 1"-14NF outer thread

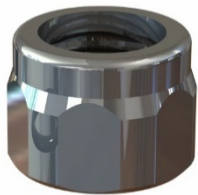


**15 026 IP****ADAPTER****PROTECTION CAP**

- Strong rubber connector protection cap especially made for protection of UHF and N type connectors used on marine and base station installations. The cap can be fitted to either RG58 or RG213/14 type of cables

**10000-451****ADAPTER****ADAPTER VHF/AIS/DAB23  
DELTRIN 1"-14NF**

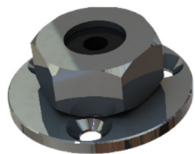
- Light-weight adapter for placing VHF23 type antennas on US-style brackets with 1"-14 threaded stud

**10000-431****ADAPTER****1" REVOLVING NUT KIT**

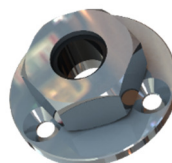
- 1" Revolving Nut and O-ring for mounting Marine & Base Antennas on G1"-11 threaded brackets
- Chrome plated solid brass

**10000-491****ADAPTER****MOUNTING ADAPTER**

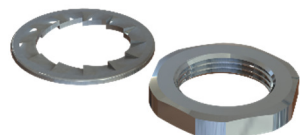
- Mounting Kit for mounting lightweight and medium duty Marine and Base Station Antennas on brackets with mounting hole  $\varnothing$  16 - 17.5 mm

**10000-481A****ADAPTER****CABLE FEED THROUGH****A: ( $\varnothing$ 5-6MM) 10000-481A**

- Water-proof Cable Feed-through for deck and wall mounting
- For cable  $\varnothing$  5-6 mm (RG213 a.o)
- Chrome plated solid brass

**10000-481B****ADAPTER****CABLE FEED THROUGH****B: ( $\varnothing$ 10-12MM) 10000-481B**

- Water-proof Cable Feed-through for deck and wall mounting
- For cable  $\varnothing$  10-12 mm (RG213 a.o)
- Chrome plated solid brass

**10000-501A****MOUNT****MOUNTING KIT LARGE**

- Mounting Kit for mounting Marine and Base Station Antennas on brackets with mounting hole  $\varnothing$  25-26 mm

**10000-500B****MOUNT****MOUNTING KIT SMALL**

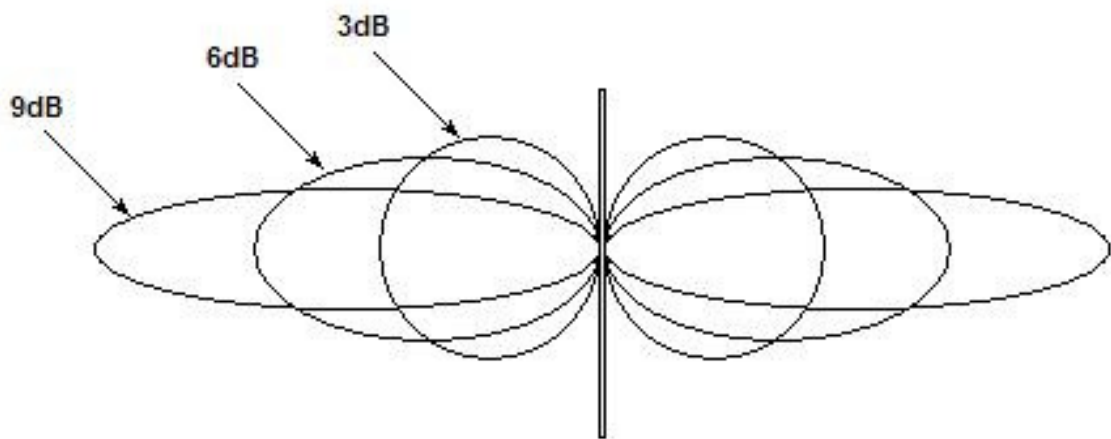
- Mounting Kit for mounting lightweight and medium duty Marine and Base Station Antennas on brackets with mounting

### Gain Reference

Gain is one of the main parameters of an antenna. The gain of an antenna is a figure stating how much energy the antenna transmits/receives in the main direction compared to a reference antenna

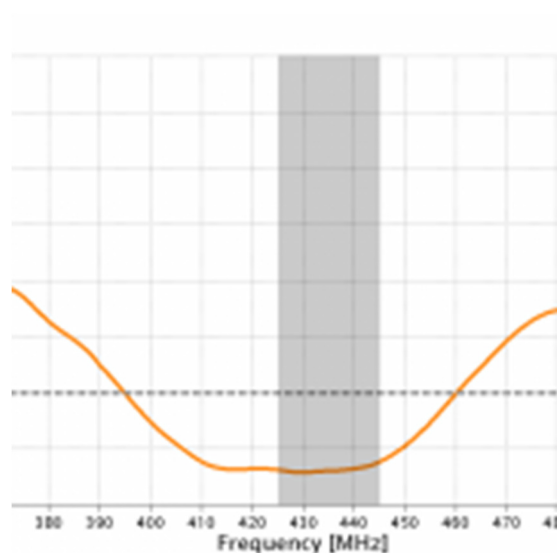
Conversion between the simple equation: 0 dBd = 2.15 dBi

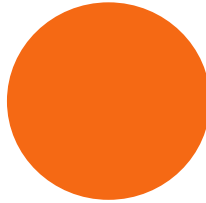
dB (Marine)	dBi	dBd
3	2.15	0
6	5.15	3
9	7.15	5



### VSWR

VSWR (Voltage Standing Wave Ratio), is a measure of how well the antenna is matched to 50 ohms at different frequencies. VSWR 1.0:1 is a perfect match.





*SCAN Antenna is a long- established company and has many designs for customers.*

*We are a technology-focused company. Growth has come from our reputation for supplying quality products, and we provide effective and well documented manufacturing and quality control. We have modern Head Quarters and laboratories with the most advanced design, simulation, test & measurement tools.*

*SCAN Antenna supply for heavy duty use when connectivity is vital and truly matters.*

*More than a million marine antennas have been produced at our factory.  
That product line has primarily been under private label.*



## **Midtkom ApS**

Ølandsvej 4  
DK - 8800 Viborg  
+45 40 500 900  
info@midtkom.dk  
www.midtkom.dk

